

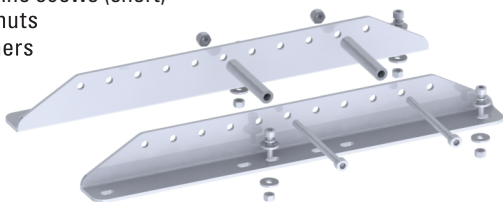
# YEPP Adapter

For Yepp Maxi  
Compatible with  
Boda Boda V1,V2 &  
Mundo V3,V4



## Contents:

- |                     |                             |
|---------------------|-----------------------------|
| 2 angle rails       | 4 M5 machine screws (long)  |
| 2 spacer tubes      | 4 M5 machine screws (short) |
| 2 M6 machine screws | 4 M5 lock nuts              |
| 2 M6 locknuts       | 8 M5 washers                |
| 4 M5 split washers  |                             |

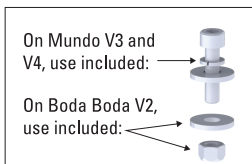


## Tools needed:

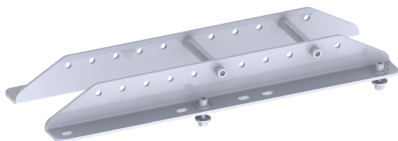
- 10mm or adjustable wrench
- 3mm, 4mm & 5mm allen key

## Instructions:

- Choose either the front or rear 4 bolts, depending on the seat position you want and remove them
- This product can be used with or without the top deck in place\*
- Mount the two angle rails to the rack using included M5 bolts, making them finger tight
- On Mundo V3, V4 & Boda V1 use included split washers
- On Boda Boda V2 use included M5 lock nuts, and check that the bolt goes completely through the nut
- Position the Yepp seat on the deck where you would like it, noting which horizontal hole in the angle rail is closest to the Yepp's keyhole
- Take the seat off the rack



- Align a spacer tube to this hole and bolt it into place using the M6 bolt and nut
- Bolt the second spacer tube into the 4th hole forward (3 holes left open between bolts)
- Tighten spacer tube bolts to 5Nm and check that the bolts go completely through the nuts
- Check that the adapter is centered, and tighten the M5 bolts to 5Nm, securing the adapter to the rack
- Attach the seat using the Yepp instructions
- Shake seat to check if all connections are tight and strong



\* When using a Yepp adapter and a top deck, use the longer of the M5 machine screws - without a top deck use the smaller of the M5 machine screws

## Warning:

- Check bolts for loosening or signs of distress regularly

for more information:  
**yubabikes.com**