

## Dynamo- Powered LED Light Kit

Tools needed:

- T25 torx wrench
- 5mm allen key
- 10mm box wrench
- Needle nose pliers
- Cable ties

**Steps:**



1. Remove front wheel

# Installation Instructions



2. Using T25 Torx wrench, remove brake rotor from wheel. Set aside. Do not touch the braking surfaces of the rotor.



3. Remove tire, tube and rim strip from wheel. Set aside

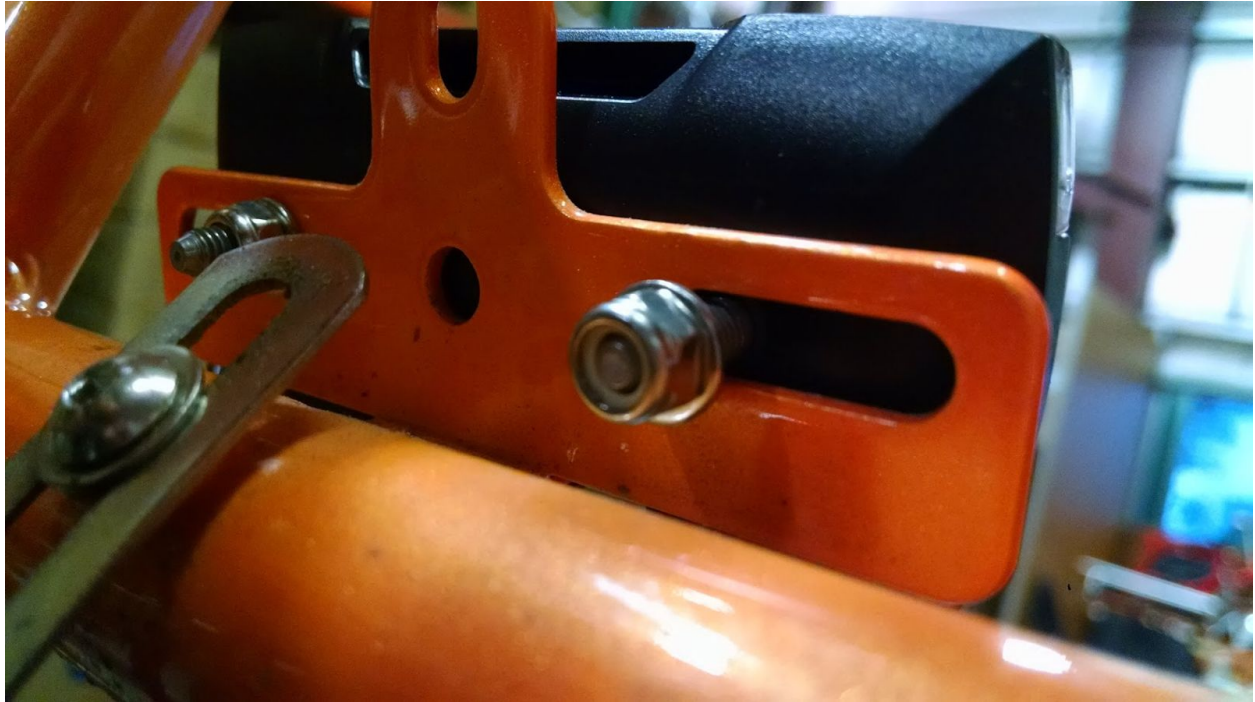




4. Using 5mm allen key and 10mm box wrench, remove fender bolt at fork crown



5. Install headlight at fork crown using fender bolt. Use needle nose pliers to ensure L bracket is straight after tightening nut and bolt.



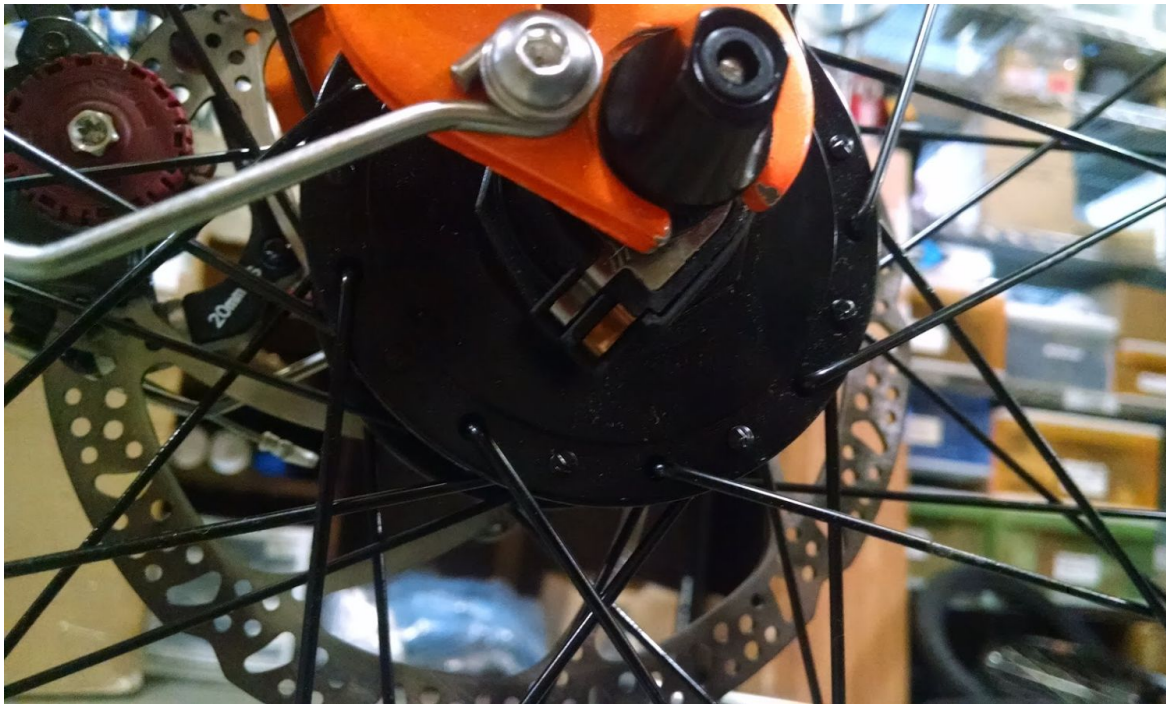
6. Install tail light onto rear reflector bracket
7. Install tire, tube and rim strip onto new dynamo wheel
8. Install rotor onto new dynamo wheel



# Installation Instructions



9. Install fully assembled dynamo wheel into fork



- a. Make sure headlight wire connection is on non-drive side of bicycle
- b. Make sure headlight wire connection is placed in 8 o'clock position
- c. Tighten quick release skewer fully

# Installation Instructions



10. Install 2-part plastic connector onto headlight wire



- a. Exposed wires install into circles on top of gray piece
- b. Wires exit bottom of piece and wrap around the bottom



- c. Black piece seals and secures wires in place



# Installation Instructions



11. Snap plastic connector onto headlight wire connection
  - a. Bevelled edges of connector will face out, ensuring wires make proper contact



12. Gather excess wire and bundle against the fork leg using cable ties. Cut excess from cable tie ends.



13. Spin wheel to test. Headlight should light up while wheel is moving.



14. Remove plastic wire cover from rear of headlight

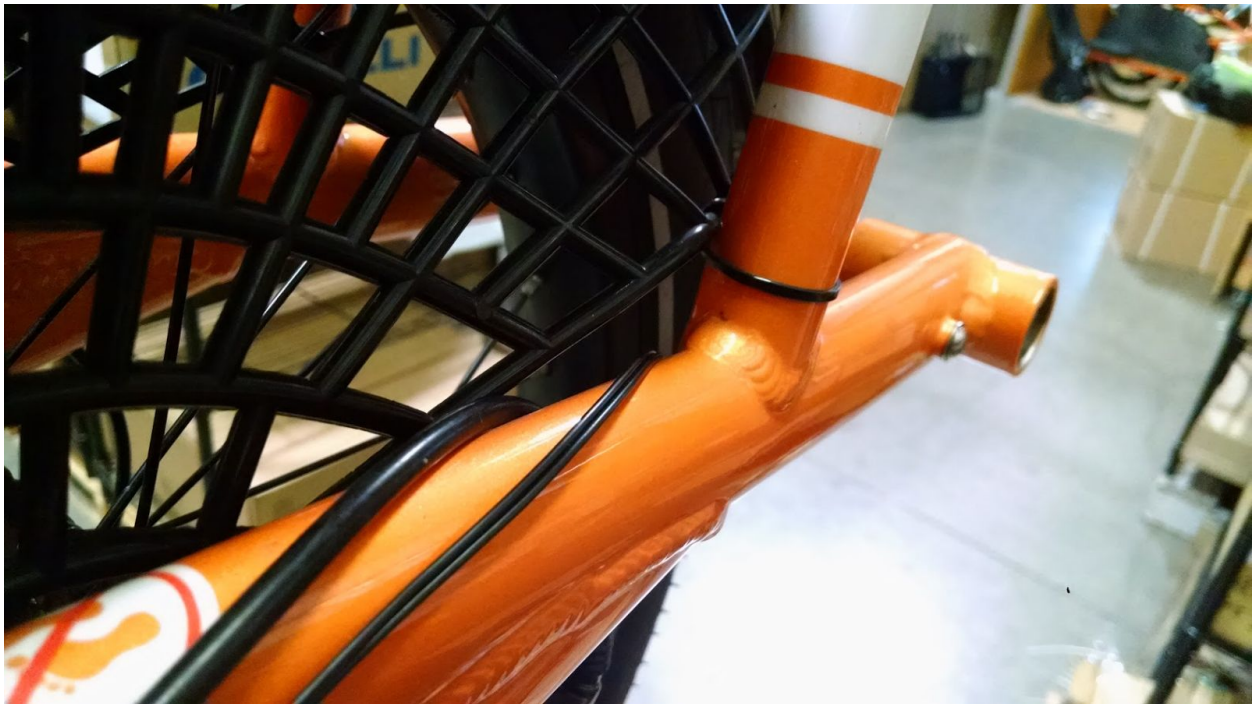




15. Install female cable ends on long wire onto bladed connections in headlight
  - a. Black plastic cover does not reinstall



16. Run wire to rear of bicycle rack along top tube...



a. Along seat stay





b. And up rear rack stay

17. Secure wire to frame using existing U-Clips and cable ties

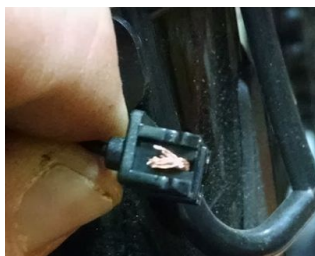
# Installation Instructions



18. Install black 1-piece from tail light connector onto long wire



a. Exposed wires insert into circles on top of piece



b. Wires exit bottom of piece and wrap around the sides





19. Insert connector into bottom of tail light



20. Spin front wheel to test